

Environmental Impact Assessment of Mining Sites in British Columbia, Canada

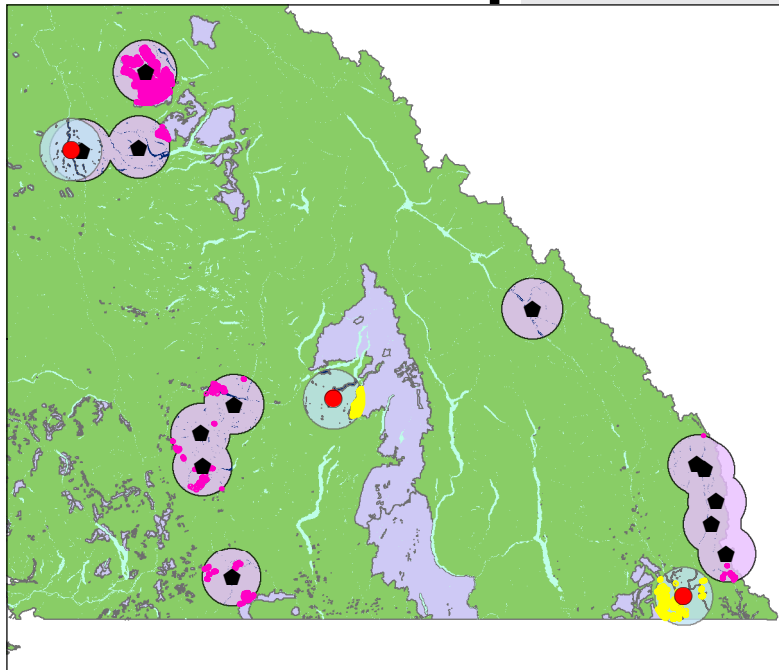
Claudia Uhlir 84891753, Madison Brown 69660108, Kennedy Tuccaro 13115332

GEOB270 UBC, December 3rd 2019

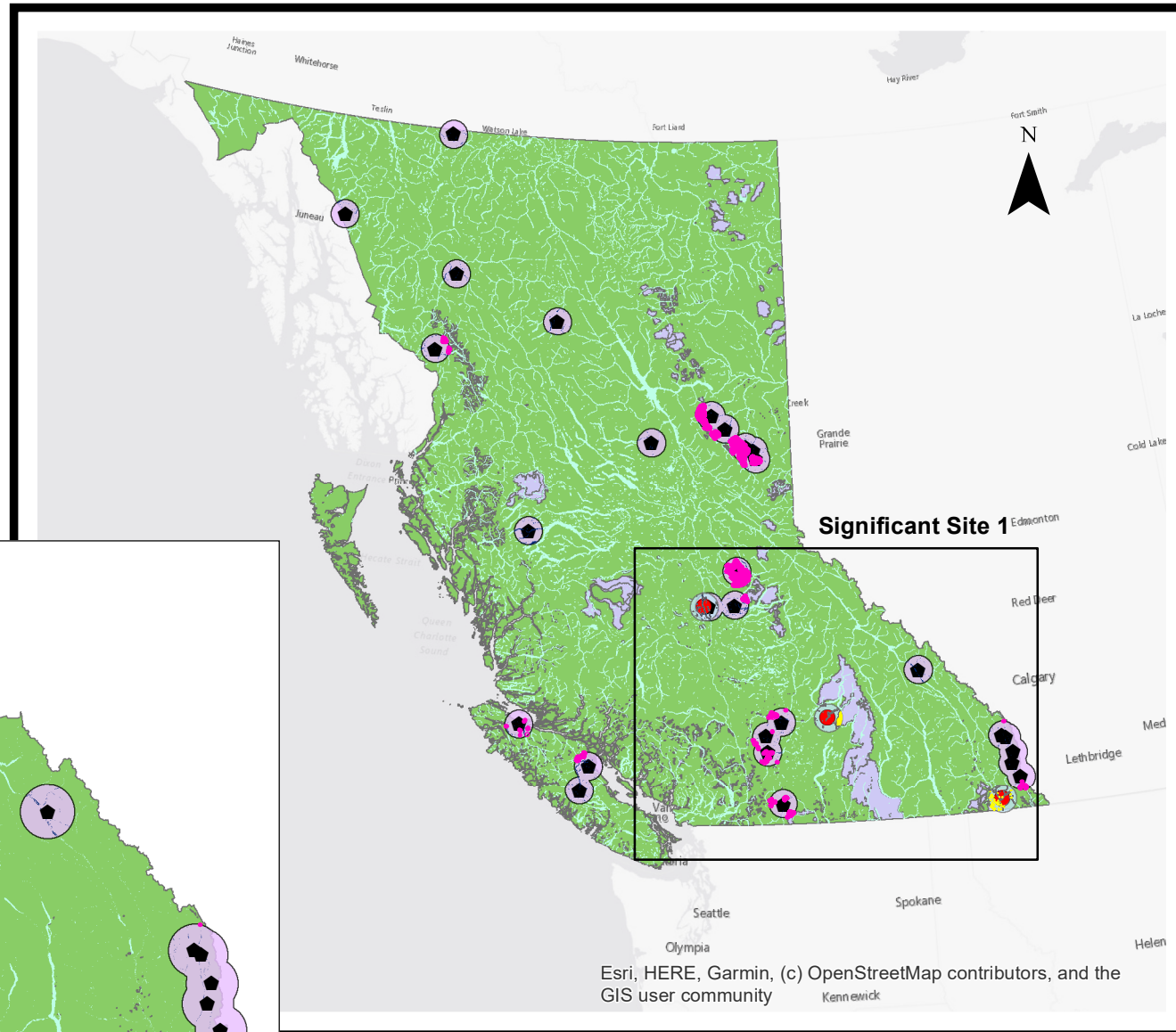
Legend

- Permitted Mines
- Poor and Marginal Water Quality Sites
- BC Rivers
- Rivers within 25km of Mine
- Rivers Within 25km of Poor or Marginal Quality Water Site
- 25km Buffer Mines
- 25km Buffer Poor or Marginal Water Quality Sites
- BC Wildlife Habitat
- Wildlife Habitat within 25km of Poor or Marginal Water Quality Sites
- Wildlife Habitat within 25km of Mine Site

Significant Site 1



Wildlife habitat areas for species at risk/regionally important wildlife in close proximity (25km) of poor and marginal water quality sites and mines located in south east British Columbia



0 75 150 300 450 600 Kilometers

Esri, HERE, Garmin, (c) OpenStreetMap contributors, and the GIS user community

Data Source: DataBC
Government of Canada