

Environmental Impact Assessment of Mining Sites in British Columbia, Canada

Claudia Uhlir 84891753, Madison Brown 69660108, Kennedy Tuccaro 13115332

GEOB270 UBC, December 3rd 2019

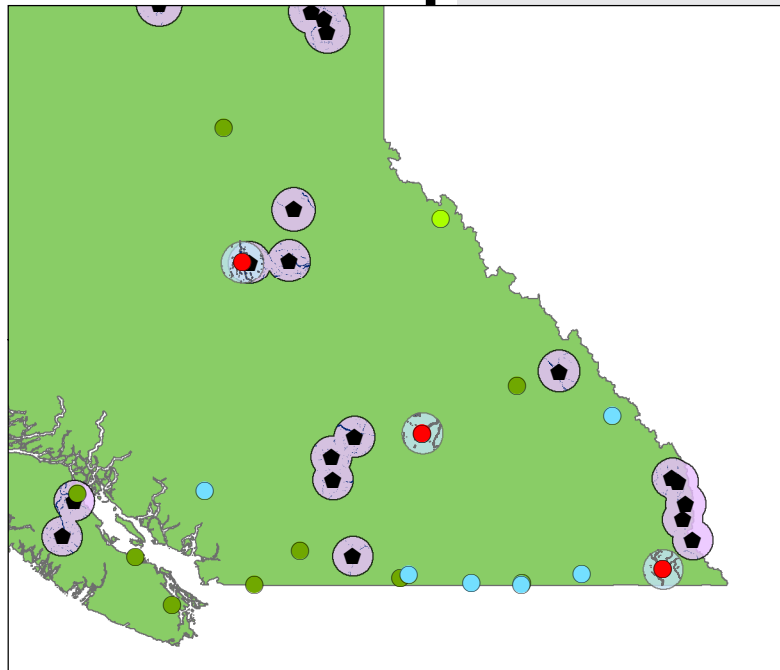
Legend

- Permitted Mines
- Poor and Marginal Water Quality Sites
- BC Rivers
- Rivers within 25km of Mine
- Rivers Within 25km of Poor or Marginal Quality Water Site
- 25km Buffer Mines
- 25km Buffer Poor or Marginal Water Quality Sites

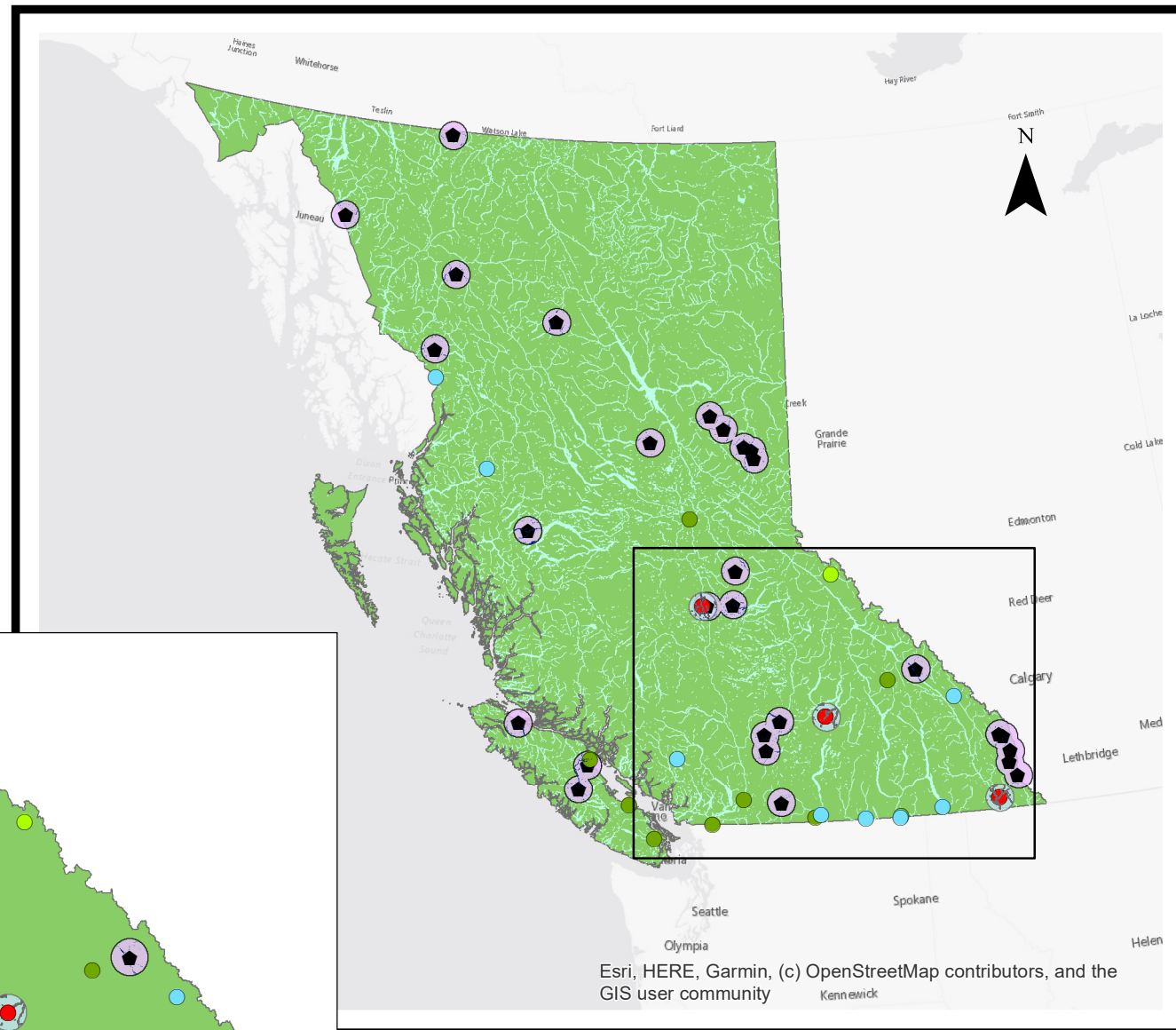
Water Quality Monitoring Sites

Category

- Excellent
- Fair
- Good
- Marginal
- Poor



Poor and Marginal Water Quality Sites Located in South East British Columbia



0 112.5 225 450 675 900 Kilometers

Data Source: DataBC
Government of Canada